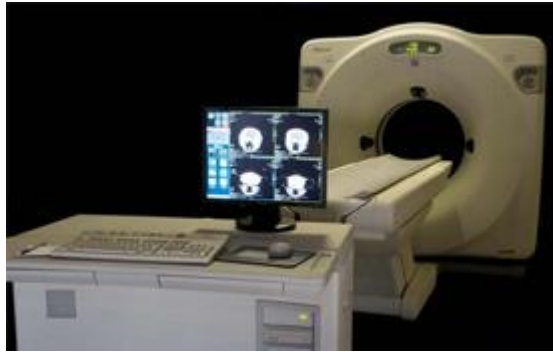


GE HiSpeed Lx/i - Single Slice



HiSpeed Lx/i System includes:

- Single Slice Spiral CT Scan
- Single Slice Solid State Detector
- Interface: 1-Screen, Mouse Driven, Icon Bas
- Tube heat capacity: 3.5 MHU
- Scan Time: 1,1.5,2,3
- Maximum scan technique: 350 mA at 120 kV
- kV settings: 80, 120, 140
- Nominal slice thicknesses (mm): 1, 2, 3, 5,7,10
- DICOM send, receive, print, work list